

REFERRAL DECISION AID

For children with developmental delays in Melbourne's west (zero to school-aged)

This guide will help referrers understand referral pathways for services.

Valid until implementation of the National Disability Insurance Scheme (NDIS). Implementation in Melbourne's west is planned to commence October 2018.

STEP 1 IDENTIFY THE DEVELOPMENTAL DOMAINS WHERE DELAYS ARE PRESENT

DOMAIN 1 PHYSICAL HEALTH AND WELLBEING	DOMAIN 2 COMMUNICATION SKILLS AND COGNITION	DOMAIN 3 SOCIAL COMPETENCE AND EMOTIONAL MATURITY
<ul style="list-style-type: none"> – Fine motor – Gross motor – Coordination – Self care – Dressing – Toileting – Sensory – Eating, drinking and swallowing 	<ul style="list-style-type: none"> – Understanding – Using words and language – Speaking clearly – Voice, fluency (including stuttering) – Thinking, ideas and learning skills – Problem solving – Play skills 	<ul style="list-style-type: none"> – Social and emotional regulation (e.g. tantrums, impulsivity) – Self confidence – Social relationships – Behaviour – Separation – Attention

STEP 2 IDENTIFY THE SEVERITY OF THE DELAY IN EACH DOMAIN [✓]

MILD	MODERATE	SEVERE	MILD	MODERATE	SEVERE	MILD	MODERATE	SEVERE
------	----------	--------	------	----------	--------	------	----------	--------

MILD

- Skills/function a little less advanced or show a minor difference to the child's peers, AND/OR
- Child needs occasional support from adults to participate in activities.

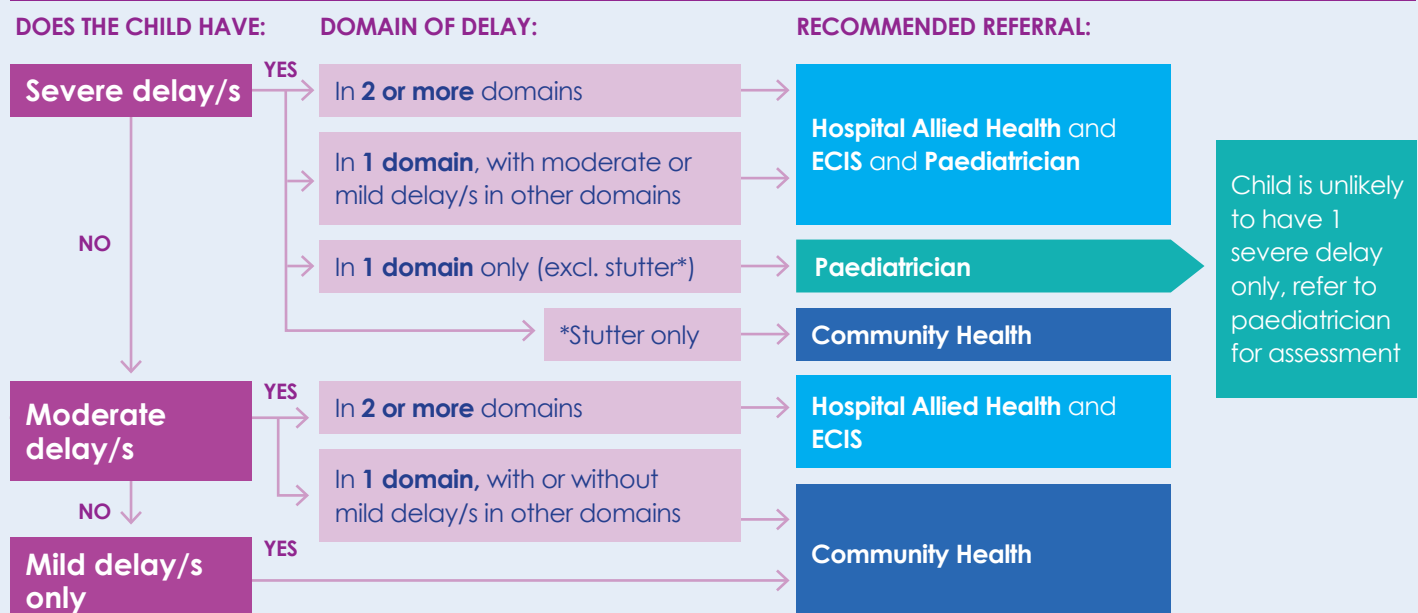
MODERATE

- Skills/function noticeably less advanced or different to child's peers, AND/OR
- Child needs regular support from adults to participate in activities.

SEVERE

- Child has disability or substantial functional limitations that prevent them from participating in activities in the same way as their peers.

STEP 3 IDENTIFY THE MOST APPROPRIATE LOCAL SERVICE FOR REFERRAL



There may be rare exceptions to this process. In these instances please contact the relevant service before referring.

STEP 4 COMPLETE APPROPRIATE REFERRAL PROCESS FOR THE SELECTED SERVICE

CONCURRENT REFERRALS:

- ✿ Children referred to a **hospital-based allied health service** should also be referred to the **Early Childhood Intervention Service (ECIS)** intake service. This will ensure they are included in the transition process to the NDIS agreed by Victoria and the Commonwealth.
- ✿ Children referred to a **hospital-based allied health service with severe delay/s** must also be referred to a **Paediatrician** for a paediatric assessment. This will ensure they receive the most appropriate services.

PAEDIATRICIAN

If the child does not currently have a Paediatrician, they will need to see their GP for a referral.

This applies to both public and private Paediatricians.

COMMUNITY HEALTH SERVICES

cohealth

LGAs Maribyrnong, Moonee Valley, Melbourne and parts of Brimbank (when cohealth is the closest service)

Phone (03) 9448 5521

Fax 7000 1827

Email serviceaccess@cohealth.org.au

www.cohealth.org.au

Djerriwarrh Health Service

Melton Community Health Centre and Caroline Springs Community Health Centre

LGA Melton

Phone (03) 9747 7609

www.djhs.org.au

IPC Health

LGAs Brimbank, Hobsons Bay and Wyndham

Sunshine (03) 9296 1200

Hobsons Bay (03) 8368 3000

Hoppers Crossing (03) 8734 1400

www.ipchealth.com.au

Contact organisations for additional information about services and referral process.

PLEASE NOTE

Wait lists can apply for public providers, families may prefer to see a private provider.

Some private providers are listed on the National Health Services Directory website:

<https://about.healthdirect.gov.au/nhsd>

HOSPITAL-BASED ALLIED HEALTH SERVICES

Djerriwarrh Health Service (Melton Health)

LGA Melton

Phone (03) 9747 7603

www.djhs.org.au

Western Health (Sunshine Hospital) Children's Allied Health Service (CAHS)

LGAs Brimbank, Hobsons Bay, Maribyrnong and Wyndham

Phone (03) 8345 1430

www.westernhealth.org.au/services/cahs

Royal Children's Hospital (RCH)

LGAs Moonee Valley and Melbourne

Phone (03) 9345 5522

www.rch.org.au/outpatient/referrals/

To access RCH allied health services, a paediatric assessment is usually required before a referral can be made.

Refer to websites or contact organisations for additional information about services and referral process.

EARLY CHILDHOOD INTERVENTION SERVICE (ECIS)

Department of Education and Training

LGAs Brimbank, Melbourne, Hobsons Bay, Maribyrnong, Melton, Moonee Valley and Wyndham

Phone (03) 8397 0263 (Duty Line)

Email ecis.intake.swvr@edumail.vic.gov.au

Mail P.O. Box 2141, Footscray, 3011

Referral forms available at **www.education.vic.gov.au/childhood/parents/needs/Pages/ecis.aspx**

Referral forms to be emailed or mailed as above.