

# Refugee Health Service Coordination REFUGEE CARE PATHWAY

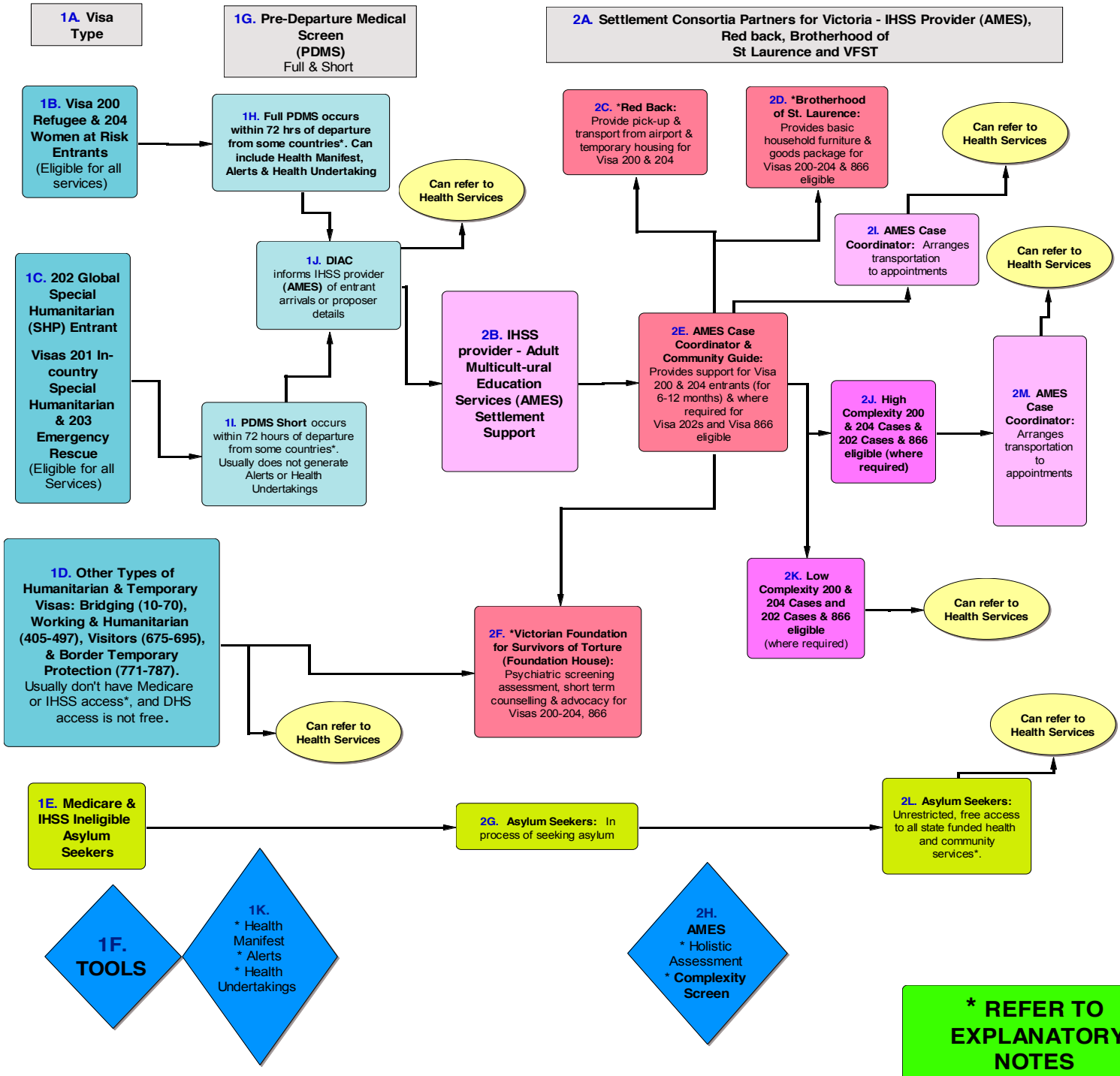
Part 1

## PROPOSED SETTLEMENT PATHWAY

REFUGEE & SPECIAL HUMANITARIAN PROGRAM VISA HOLDERS in Maribyrnong, Hobsons Bay & Wyndham, Brimbank & Melton

### 1. DIAC INITIAL CONTACT

### 2. SETTLEMENT SUPPORT



**\* REFER TO EXPLANATORY NOTES**



**HealthWest Partnership - Refugee Health Service Coordination Project**

N.B. This is the result of a consultative process and cannot be transferred directly to other regions without involvement of relevant stakeholders.